

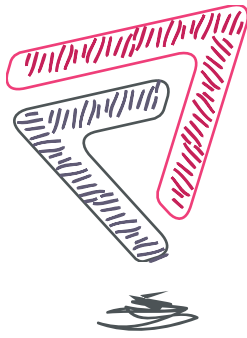
# Disability & Special educational needs

Training | Resources | Research



**NATIONAL HIGHER INSTITUTE**  
FOR TRAINING AND RESEARCH ON SPECIAL NEEDS EDUCATION





## Our missions focus on **accessibility** and support for people with **special educational needs**



As a public training and research establishment dedicated to people with special educational needs and to accessibility, INSHEA promotes inclusive education and social and professional integration.

The institute pursues its mission in three directions:

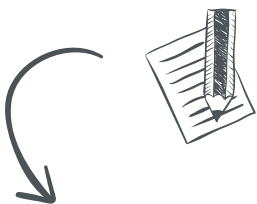
**Training** | **Resources** | **Research**

INSHEA operates in partnership with government offices, training and research bodies, non-profit organizations and companies in France and abroad. The institute contributes to the definition and implementation of policies in its areas of expertise.

### Special educational needs, who are we talking about?

- Persons with disabilities or serious illness
- Children and adolescents with learning difficulties
- Highly gifted persons
- Migrant youth and travellers
- Socially vulnerable individuals
- Prison inmates

## Training to become a key player in the development of inclusive education and social and professional integration



### Teaching

Work for the development of inclusive education

Education professionals in mainstream schools, special schools, prisons, medico-social centres: teachers, activity leaders, social workers, education inspectors, management staff...



### Professional integration

Facilitate access to employment and vocational training

Resource persons, counsellors, project officers in universities, local authorities, non-profit organizations, businesses and companies.

*In the fields of...*



### Cultural accessibility and social inclusion

Promote effective participation in society

Specialists in outreach policy, cultural mediation, accessibility to sports, artistic practices, cultural events and tourism.

# Training for a broad public

Students, teachers and educators, parents,  
non-profit groups, medico-social centres,  
businesses and companies



## ✓ Higher education diplomas

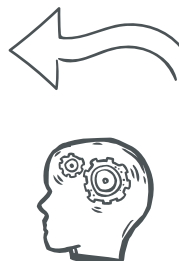
- **Master's degree: Inclusive practices: disability, accessibility, support and coaching (PIH A2)**
  - Accessibility and inclusive education
  - Counselor in accessibility and support for persons with special needs
  - Management and coordination of social work and medico-social action
- **"Licence professionnelle" (vocational Bachelor's degree):** Special vocational education and work-based insertion
- **"Diplôme d'État d'éducateur technique spécialisé" (DEETS):** National diploma as special educator in the vocational field
- **University degrees:**
  - Specific learning disorders – cognitive and teaching approaches
  - Education, migration and minority groups
  - Autism and learning processes
  - Disability – Practice and research



Training offered in e-learning  
format in partnership with  
Paris Nanterre University



Accessible teaching •  
**Management** • Training  
of trainers • **Professional  
insertion** • French sign  
language • **Braille** •  
Autism • **Language and learning  
disabilities**



## ✓ Training for the Ministry of Education

- **Cappei** : Certificate of professional competence in inclusive education practices (special education certificate)

*Specialization modules:*

- Autism spectrum conditions
- Visual impairment
- Hearing impairment
- Motor disabilities and incapacitating illness
- Language and learning disabilities
- Psychological conditions
- Cognitive function disabilities
- Severe academic difficulties

*Teacher professionalization modules:*

- Coordinating a local inclusive schooling unit (middle schools and high schools)
- Teaching in a teaching unit (in settings other than traditional schools)
- Functions of referent teacher or secretary in education commissions
- Teaching in prison

- **Director of establishment for adapted and special education Diploma (DDEAS)**
- **National training modules in the field of schooling for students with special needs (MFIN)**

## Lifelong education

Workshops • Short training  
courses • Personalized  
and on-site training



## Interdisciplinary research

INSHEA research unit (Research group on disability, accessibility and educational and academic practices (Grhapes – EA 7287) conducts research on inclusive education, professional insertion, citizenship and participation in society for people with special educational needs.

### This work focuses in particular on:

- The concept of accessibility and practical conditions for achieving it
- The evolution of the notions and representations of disability
- Analysis of educational and schooling experiences
- Learning processes of pupils with special needs
- Adaptive teaching methods
- Cooperation between the education system and medical, social and welfare services
- Participation in society, and especially access to cultural events and activities for persons with disabilities
- Full access to civil rights and citizenship

## Over 30 academic and institutional partners around the world



## International activities

International development is one of the key element of INSHEA's strategic programme:

- International cooperation, especially with countries in the European Union
- Expertise and advisory missions on inclusive education policies (Tunisia, Lebanon, Haiti, among others)

Mobility and exchange programmes



- Mobility for students and teaching staff
- Participation in international research networks

## A wide range of resources

INSHEA develops, publishes and disseminates technical, scientific and teaching resources for a broad public.



Reference library



Adapted digital resources



Specialized publications



**Journal**  
*Éducation & société inclusives*

Quarterly publication



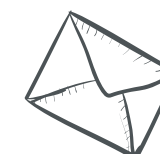
INSHEA represents France at the European Agency for Special Needs and Inclusive Education

## Keep up to date !



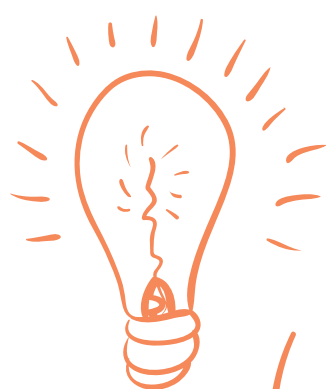
**Thematic news updates** & current knowledge bulletins

Visual impairment • Language and learning difficulties • Autism • Hearing impairment



**La lettre de l'institut**

Bimonthly newsletter



Web portal



Tactile image bank for the visually impaired



Audiovisual and multimedia production



**laboutique.**  
**inshea.fr**



58/60 avenue des Landes  
92150 Suresnes FRANCE



+33 1 41 44 31 00

**[www.inshea.fr](http://www.inshea.fr)**

